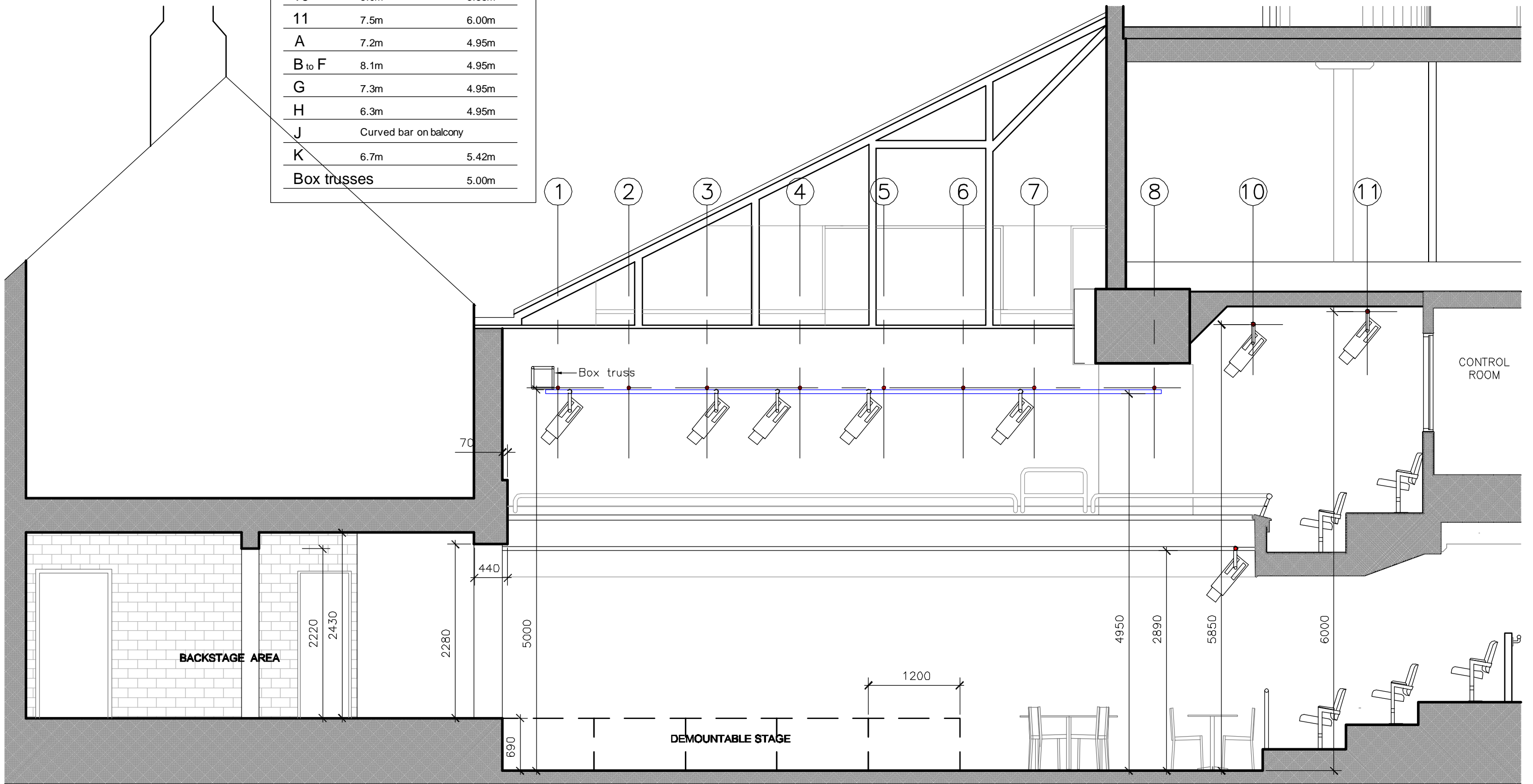


### LIGHTING BARS

BAR	LENGTH	HEIGHT (above Theatre floor)
1 to 6	8.5m	5.0m
7	7.7m	5.0m
8	8.5m	5.0m
9	Curved bar on balcony	
10	5.0m	5.85m
11	7.5m	6.00m
A	7.2m	4.95m
B to F	8.1m	4.95m
G	7.3m	4.95m
H	6.3m	4.95m
J	Curved bar on balcony	
K	6.7m	5.42m
Box trusses		5.00m



## SECTION A.A.

Do not scale this drawing. Use figured dimensions only  
Report any discrepancies to the theatre immediately  
© Live Theatre



## Live Theatre

Broad Chare  
Quayside  
Newcastle NE1 3DQ  
Tel: 0191 269 3482

project	Theatre	dwg no. <b>105</b>
drawing title	Section AA	
drawn	rbb date July 2009 scale 1:50 @ A3	